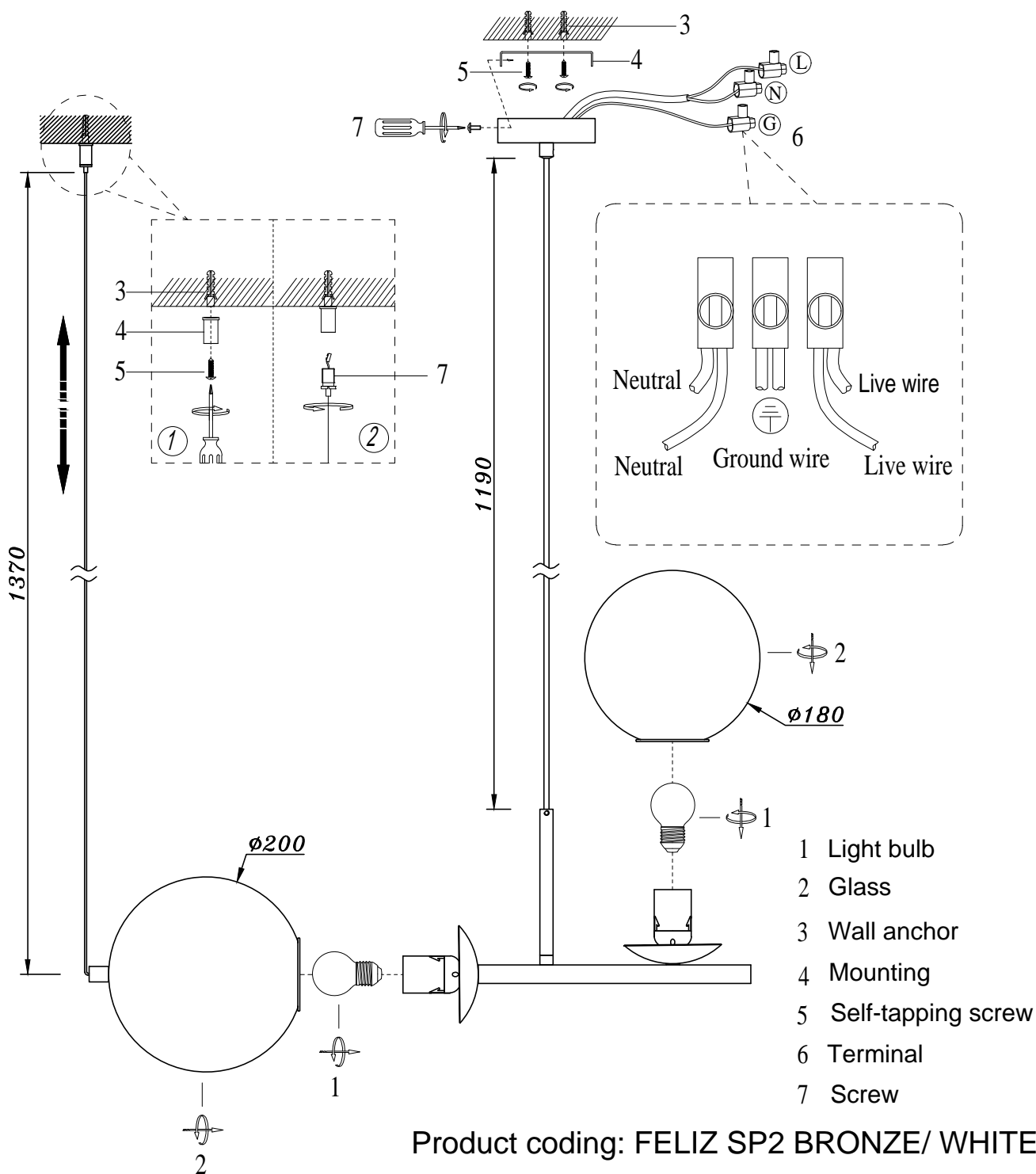


# ENGLISH

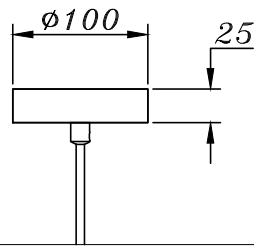
## Specification of installation

In order to ensure safety use, please notice the following items:

- .Read and understand the whole specification.
- .Suitable for the use of 220~240V and 50~60Hz.
- .Please wear gloves as installment and avoid rot on the surface of plating.
- .Must be installed on the fixed places and be checked annually.
- .Please turn off the lighting source by soft cloth as cleaning prohibited to use of rotted detergent.
- .Please connect with the local sales service center when there are any abnormality.



# CEILING PAN SIZE:



# FIXTURE SIZE:

