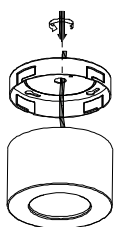
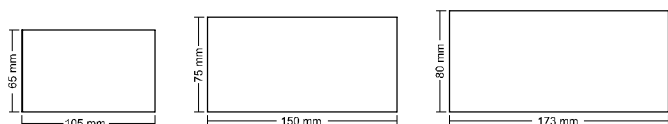


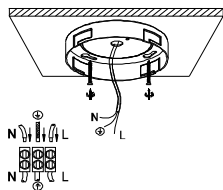
Ceiling light installation instruction

IP20   

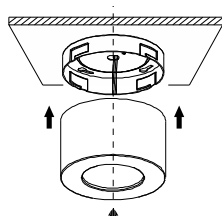
- 1 - Please read this manual carefully before using the product.
- 2 - The manufacturer will not be held responsible for improper usage or modifications of the product.
- 3 - Indoor use only.
- 4 - Please turn off the power supply before changing the lamp or connection.
- 5 - The luminaire shall be installed by a qualified electrician and wired in accordance with the latest IEE electrical regulations or the national requirements.
- 6 - The luminaire shall not be covered with thermal insulation or similar material under any circumstance.
- 7 - Do not touch the lamp source or heating parts when the power is switched on or few minutes after switching off.
- 8 - Do not place rapidly flammable material under the luminaire.
- 9 - Do not use chemical solvent to clean the luminaire, it may damage the surface.
- 10 - Products are advised to use under stabilised voltage power supply only.



STEP1: take out the side screw of the bracket



STEP2: fix the bracket in to the ceiling or wall, connect the wire to power source



STEP3: fix the light to the bracket then turn right to lock it.

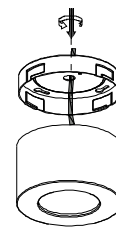
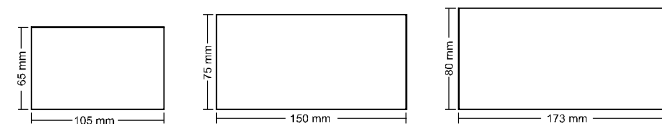
Technical parameters:

Item No.:	CLT 521C105	CLT 521C150	CLT 521C173
Power:	6W	12W	18W
Size:	Φ105x65mm	Φ150x75mm	Φ173x80mm
Hole cut:	Surface	Surface	Surface

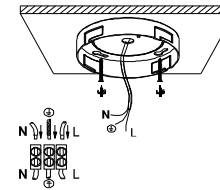
Ceiling light installation instruction

IP20   

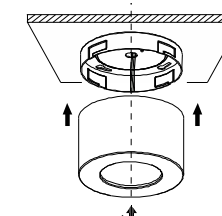
- 1 - Please read this manual carefully before using the product.
- 2 - The manufacturer will not be held responsible for improper usage or modifications of the product.
- 3 - Indoor use only.
- 4 - Please turn off the power supply before changing the lamp or connection.
- 5 - The luminaire shall be installed by a qualified electrician and wired in accordance with the latest IEE electrical regulations or the national requirements.
- 6 - The luminaire shall not be covered with thermal insulation or similar material under any circumstance.
- 7 - Do not touch the lamp source or heating parts when the power is switched on or few minutes after switching off.
- 8 - Do not place rapidly flammable material under the luminaire.
- 9 - Do not use chemical solvent to clean the luminaire, it may damage the surface.
- 10 - Products are advised to use under stabilised voltage power supply only.



STEP1: take out the side screw of the bracket



STEP2: fix the bracket in to the ceiling or wall, connect the wire to power source



STEP3: fix the light to the bracket then turn right to lock it.

Technical parameters:

Item No.:	CLT 521C105	CLT 521C150	CLT 521C173
Power:	6W	12W	18W
Size:	Φ105x65mm	Φ150x75mm	Φ173x80mm
Hole cut:	Surface	Surface	Surface